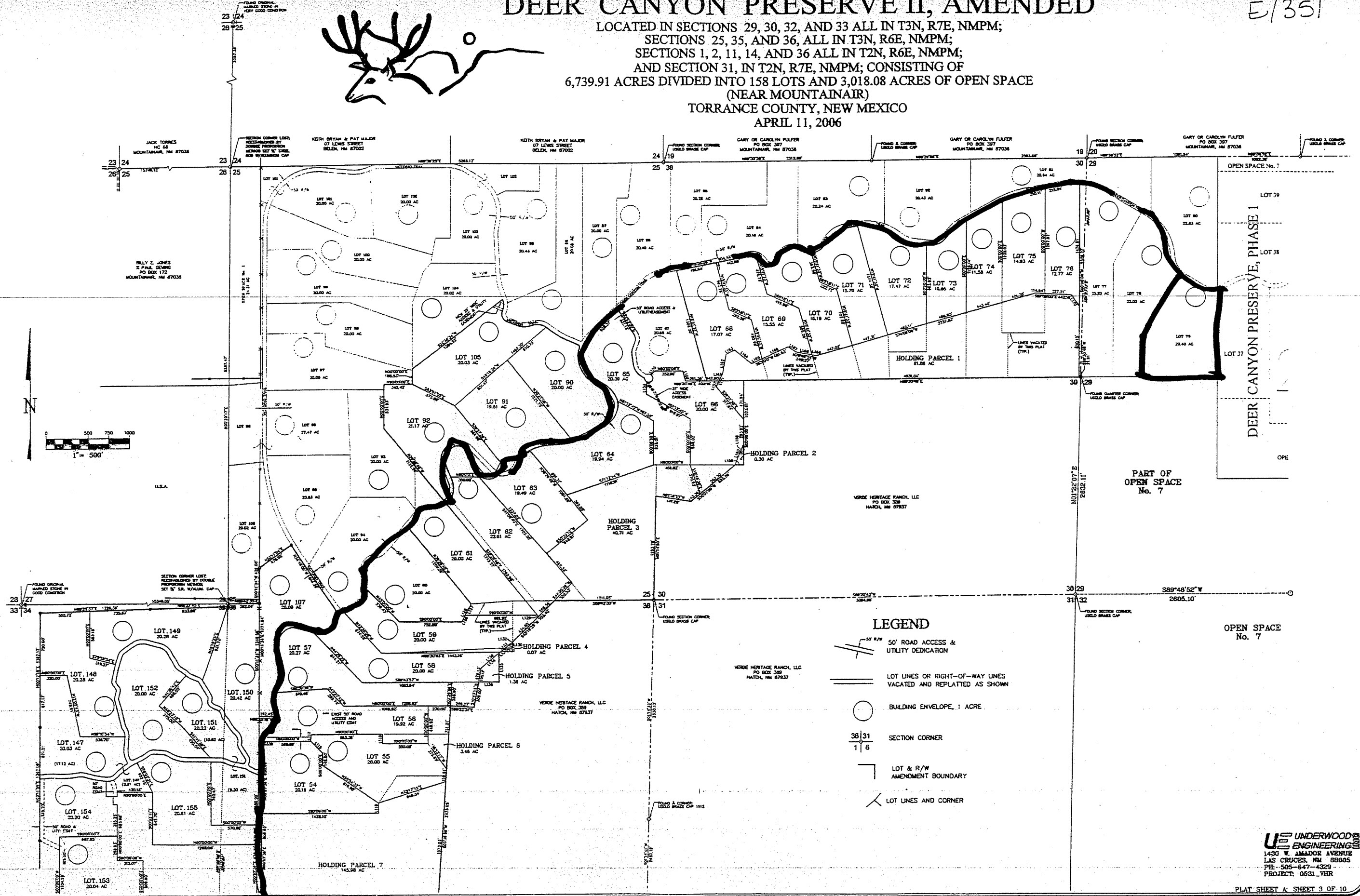


DEER CANYON PRESERVE II, AMENDED

E/351



LOCATED IN SECTIONS 29, 30, 32, AND 33 ALL IN T3N, R7E, NMPM;
 SECTIONS 25, 35, AND 36, ALL IN T3N, R6E, NMPM;
 SECTIONS 1, 2, 11, 14, AND 36 ALL IN T2N, R6E, NMPM;
 AND SECTION 31, IN T2N, R7E, NMPM; CONSISTING OF
 6,739.91 ACRES DIVIDED INTO 158 LOTS AND 3,018.08 ACRES OF OPEN SPACE
 (NEAR MOUNTAINAIR)
 TORRANCE COUNTY, NEW MEXICO
 APRIL 11, 2006



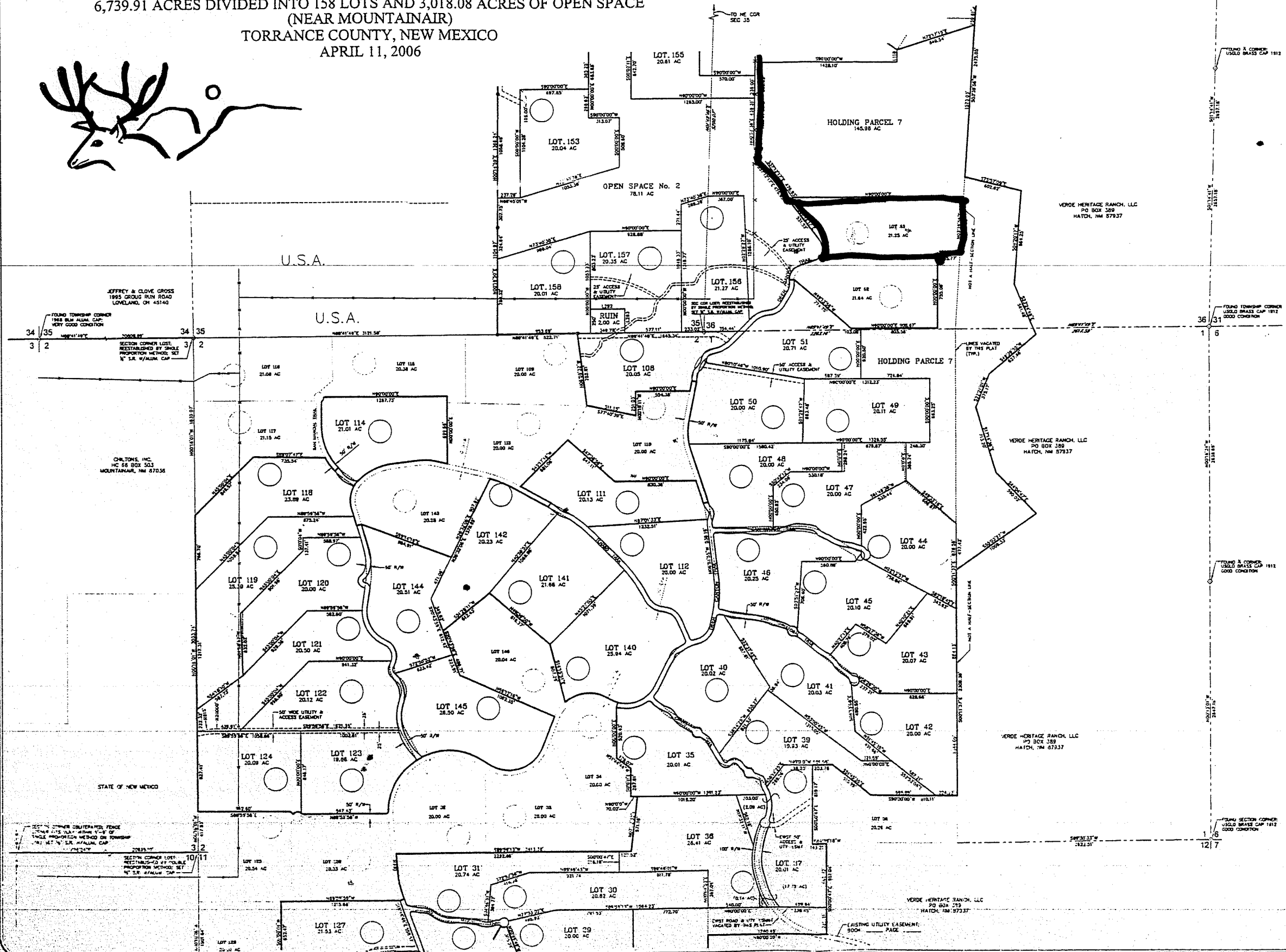
LEGEND

- 50' ROAD ACCESS & UTILITY DEDICATION
- LOT LINES OR RIGHT-OF-WAY LINES VACATED AND REPLATTED AS SHOWN
- BUILDING ENVELOPE, 1 ACRE
- SECTION CORNER
- LOT & R/W AMENDMENT BOUNDARY
- LOT LINES AND CORNER

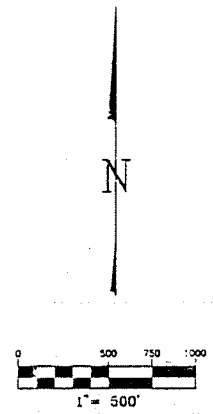
UNDERWOOD ENGINEERING
 1430 N. AMADOR AVENUE
 LAS CRUCES, NM 88005
 P/E: 505-847-4329
 PROJECT: 0531_VHR

DEER CANYON PRESERVE II, AMENDED

LOCATED IN SECTIONS 29, 30, 32, AND 33 ALL IN T3N, R7E, NMPM;
 SECTIONS 25, 35, AND 36, ALL IN T3N, R6E, NMPM;
 SECTIONS 1, 2, 11, 14, AND 36 ALL IN T2N, R6E, NMPM;
 AND SECTION 31, IN T2N, R7E, NMPM; CONSISTING OF
 6,739.91 ACRES DIVIDED INTO 158 LOTS AND 3,018.08 ACRES OF OPEN SPACE
 (NEAR MOUNTAINAIR)
 TORRANCE COUNTY, NEW MEXICO
 APRIL 11, 2006



- ### LEGEND
- 50' ROAD ACCESS & UTILITY DEDICATION
 - LOT LINES OR RIGHT-OF-WAY LINES VACATED AND REPLATTED AS SHOWN
 - BUILDING ENVELOPE, 1 ACRE
 - SECTION CORNER
 - LOT & R/W AMENDMENT BOUNDARY
 - LOT LINES AND CORNER



UNDERWOOD ENGINEERING
 1430 W. ANADOR AVENUE
 LAS CRUCES, NM 88005
 PH: 505-647-4329
 PROJECT: 05311_VHR